



Integrated Process Controls

Your Trusted Source for Fuel Solution!



www.ipcccontrols.com

info@ipcccontrols.com • (580) 252-9987

Integrated Process Controls - 1301 South Highway 81, Duncan, OK 73533



www.ipcccontrols.com (580) 252-9987 info@ipcccontrols.com

Integrated Process Controls - 1301 South Highway 81, Duncan, OK 73533



Fuel Control Panels

ISOFuel by Integrated Process Controls

ISOFuel is a mechanical based isolation control system that simplifies the electrical installation of fueling equipment, it's custom built to ensure proper site operation with no wasted hardware - keeping size and price in mind, and it's built by electricians for electricians with the goal of providing a quick, easy and simple installation.

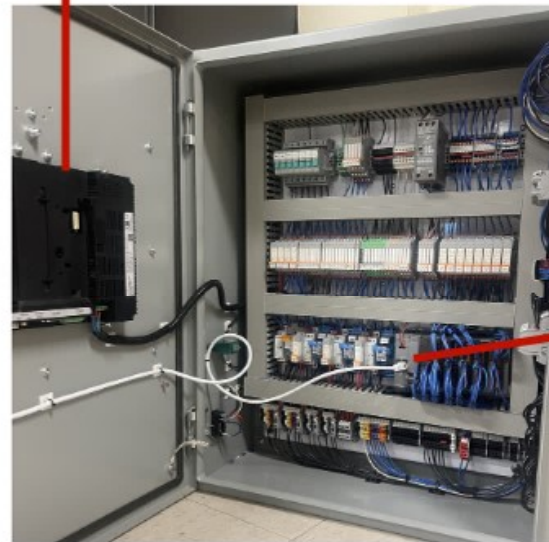
Benefits

- **SPACE SAVING.** Wall space is a premium in the backroom of stores.
- **Integrated 24 volt, fail safe all stop circuit** with indicators showing which button is pushed.
- **Dedicated electrical subpanel for the fueling system.**
- **No need to purchase individual contactors or motor starters for the STP's, they are included.**
- **Save time on installation.**
- **All of the wiring to dispensers, pumps and ATG have identified terminals legends not just numbers.**
- **Many more benefits and options not listed. Please give us a call to discuss.**

EXPLORE OUR THREE AVAILABLE OPTIONS

Option #1 - PLC/HMI Digital Control

- **Store and Fuel Control and Monitoring.**
- **Offsite Control.**
- **Refrigeration, Monitoring and Remote Set Points.**
- **Offsite Trouble Shooting of Fuel System.**
- **Email maintenance when problems occur.**
- **Predictable maintenance.**
- **Store and Site lighting control base on the amount of ambient light.**



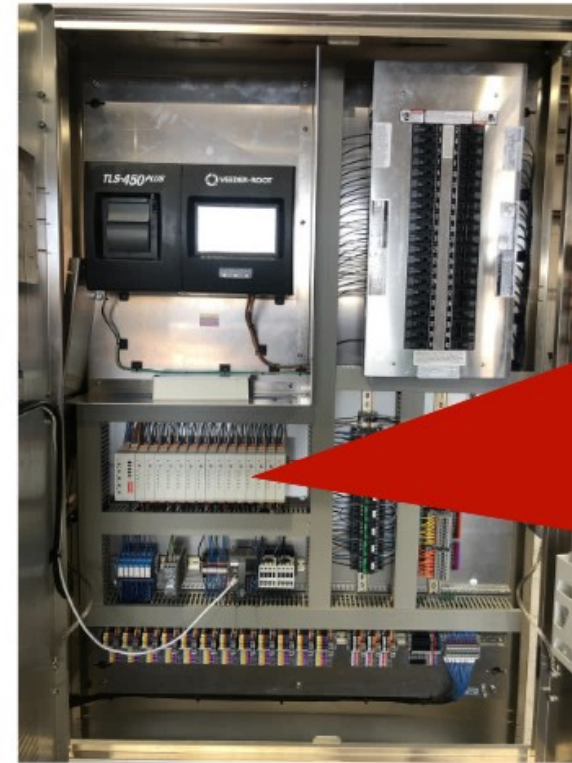
HMI Screen



PLC Controller



Option #2 - Modules Control



The ISOFuel Modules allows the user the ability to configure a fuel system to easily function with any ATG manufacturer and control any STP, whether they are using contactors, SC controllers or VFC drives.



Option #3 - Mechanical Relays Control

- **All necessary controls for maintenance are located on the front of the ISO Fuel enclosure.**
- **Data/Credit Card Wiring Terminals.**
- **Automatic Tank Gage (Monitoring System).**
- **Master Reset Button.**
- **ATG Interface Wiring (EVO).**
- **Surge suppression designed to protect the ISO Fuel system.**

